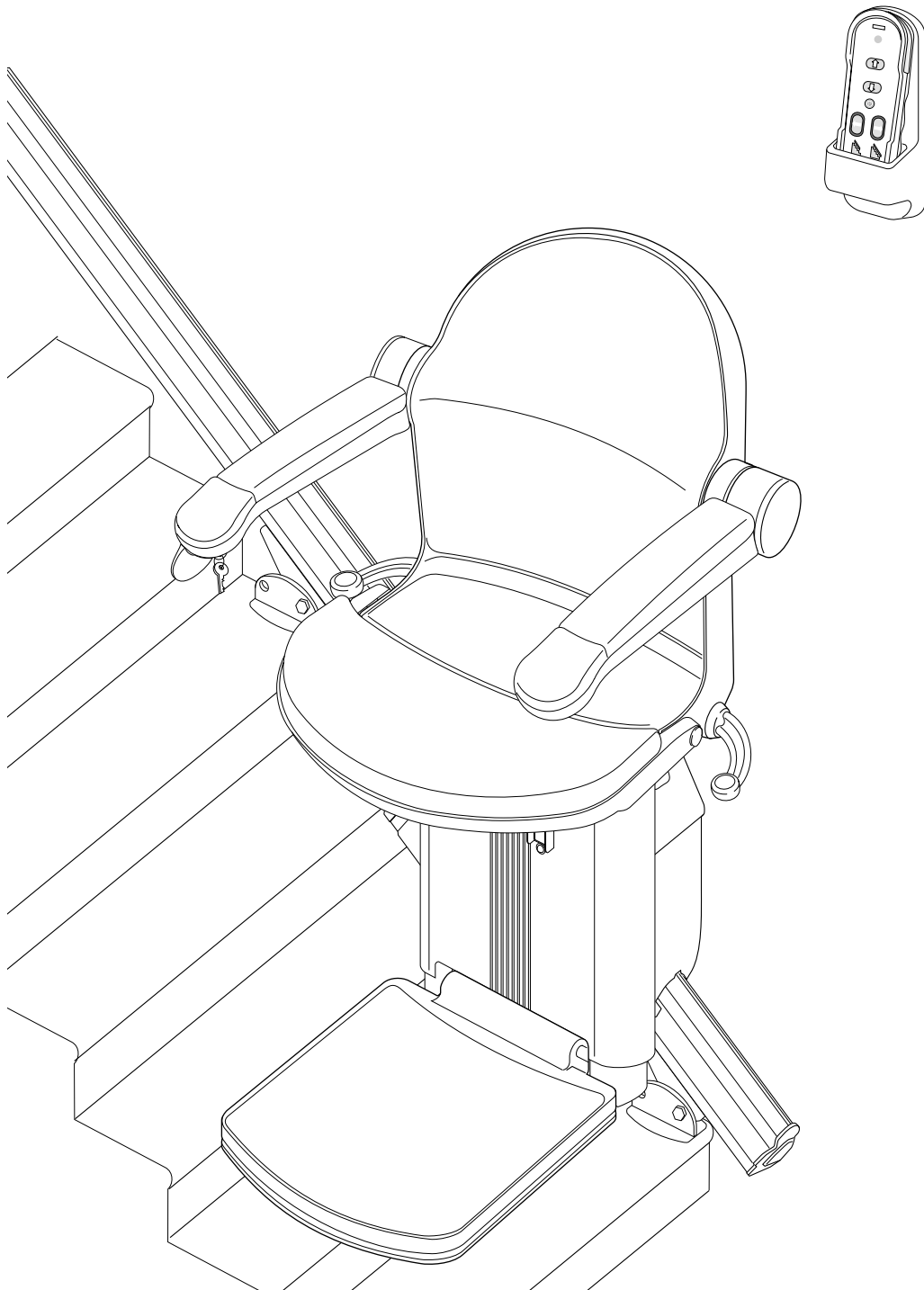


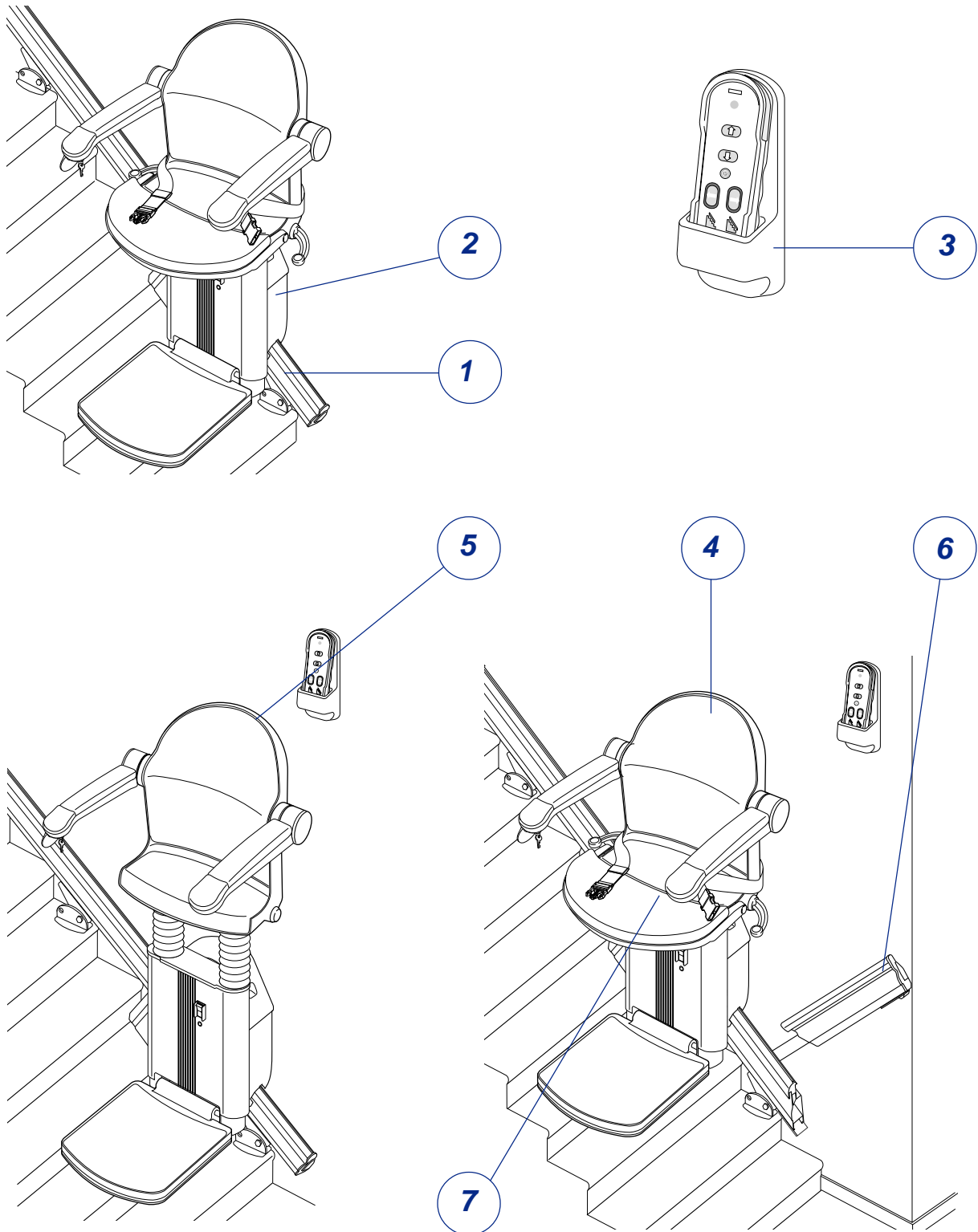


Features and Benefits



Minivator 1000 series

Features of the Minivator 1000



1. Slim line rail

The slim line rail provides the closest fit to the wall of any stairlift rail in the market by some margin. The rail is designed to be aesthetically pleasing but also leaves the stairway clear for others in the home to use and reduces any trip hazard at the bottom or top of the stair by being close to the wall.

2. Smooth start stop/stop DC power pack.

The 1000 series is designed on a 24v DC system which has pre-programmed chip which has been programmed to provide exceptionally smooth start and stop both at top and bottom of staircase. This provides the user with more confidence in using the lift as well as stopping any jolting feeling which may affect those users with arthritis and other painful disabilities.

3. Hand held infra red remote control

The Minivator 1000 is controlled by an infra red remote control which can either be hand held or wall mounted. The infra red control of the lift means that there is no need for messy wiring during installation meaning that this affects less somebody's home décor and provides for a neater and more polished finish to the stairlift. About the only time that any wires to this unit are required is when a powered folding or manual folding rail are installed. In addition, each lift comes with wall mountable brackets which enabled the hand held remote control either to be loosely fitted so that it can be slotted in or slotted out of the wall bracket or permanently installed in the wall brackets to prevent removal of the hand held remote controls.

4. Luxury seat

The lift comes complete with a luxury seat which allows you to be sitting in a normal position, obviously providing the normal safety requirements of a seat belt. In addition, there is also a spacesaver seat available for tight staircases which allows the lift to fit into a minimum of a 680mm clear width staircase.

5. Perch seat

There is also a perch seat available for users with low knee flexion or who may prefer to be in a more vertical position whilst riding up the staircase.

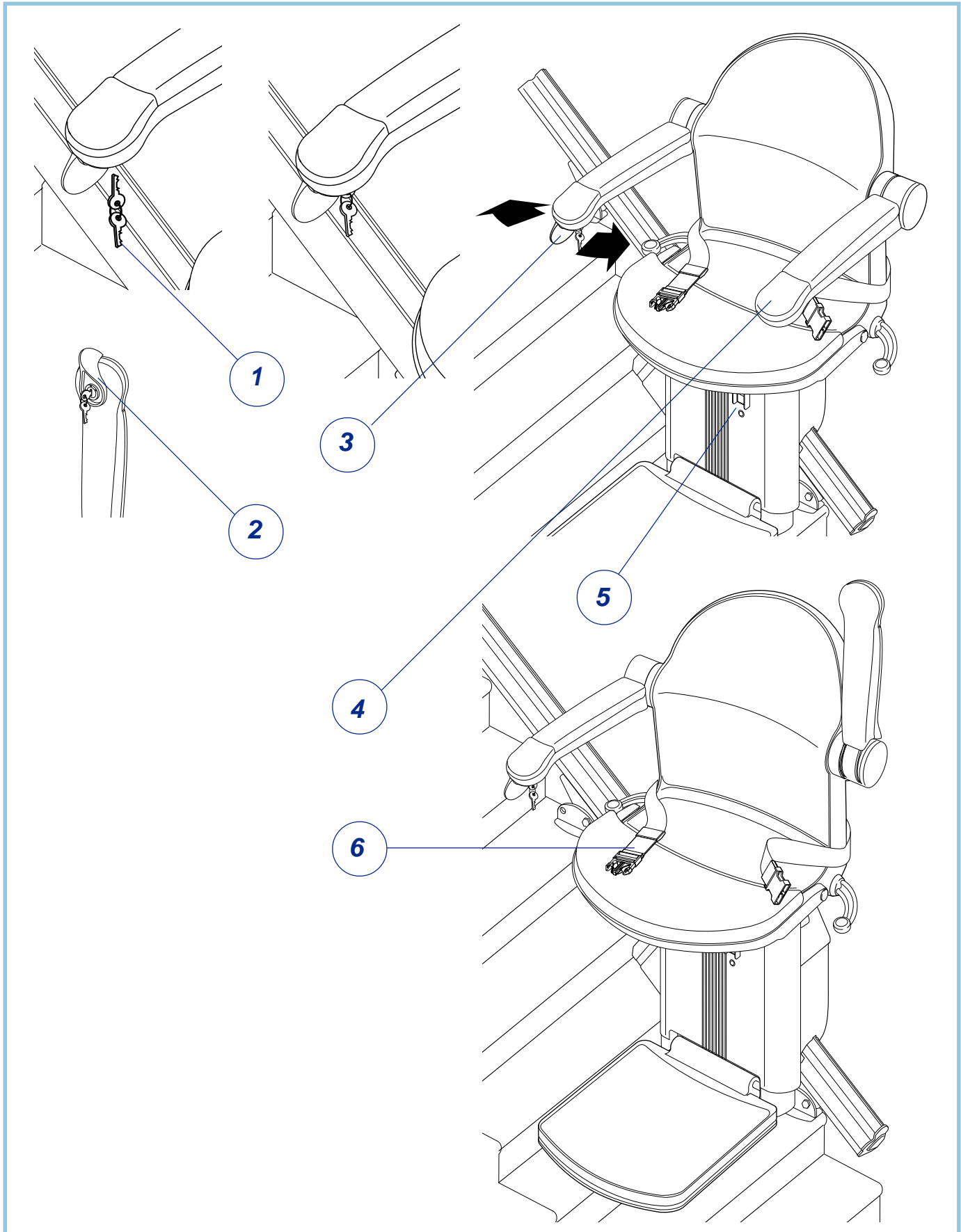
6. Hinged rail

The lift is also able to be fitted with a powered folding or manual folding hinge rail for staircases where there may be a doorway or other hallway where the track would cause an obstruction.

7. Maximum weight

Maximum user weight of 137kg or 21 stone. This applies both to lifts with or without an hinge rail.

Features of the Minivator 1000 Armrest



1. Key switch

The lift comes complete with a key switch with removable key which allows for the lift to be parked and safely left without potential of interference or use by authorised users such as children who may be in the household.

2. Key position

The key lock is positioned under the arm of the lift thus providing a protected area for the key switch which will prevent additional damage to a lift by users knocking into the key. The key can be simply inserted into the arm whilst the arm is in the upright position as shown. This again makes for easy use for people who may have problems with mobility in their hands.

3. Operating lever

The 1000 series has a revolutionary new operating lever. The lever has been especially designed for easy use for people who may have difficulty with hand mobility in addition to this it also provides much more robust solution than the conventional toggle switches preventing breakdown and subsequent call out to the lift. The operating lever can be fitted to either the left or right arm as the arms themselves are universal.

4. Arm rest ends

The arm rest ends are left clear due to the new operating lever allowing the user the whole of the arm rest ends to be able to push up themselves into the standing position from the lift. The arm rests are designed to take a weight of 21 stone each providing a very robust and safe way for the user to exit the stairlift.

5. On/off switch

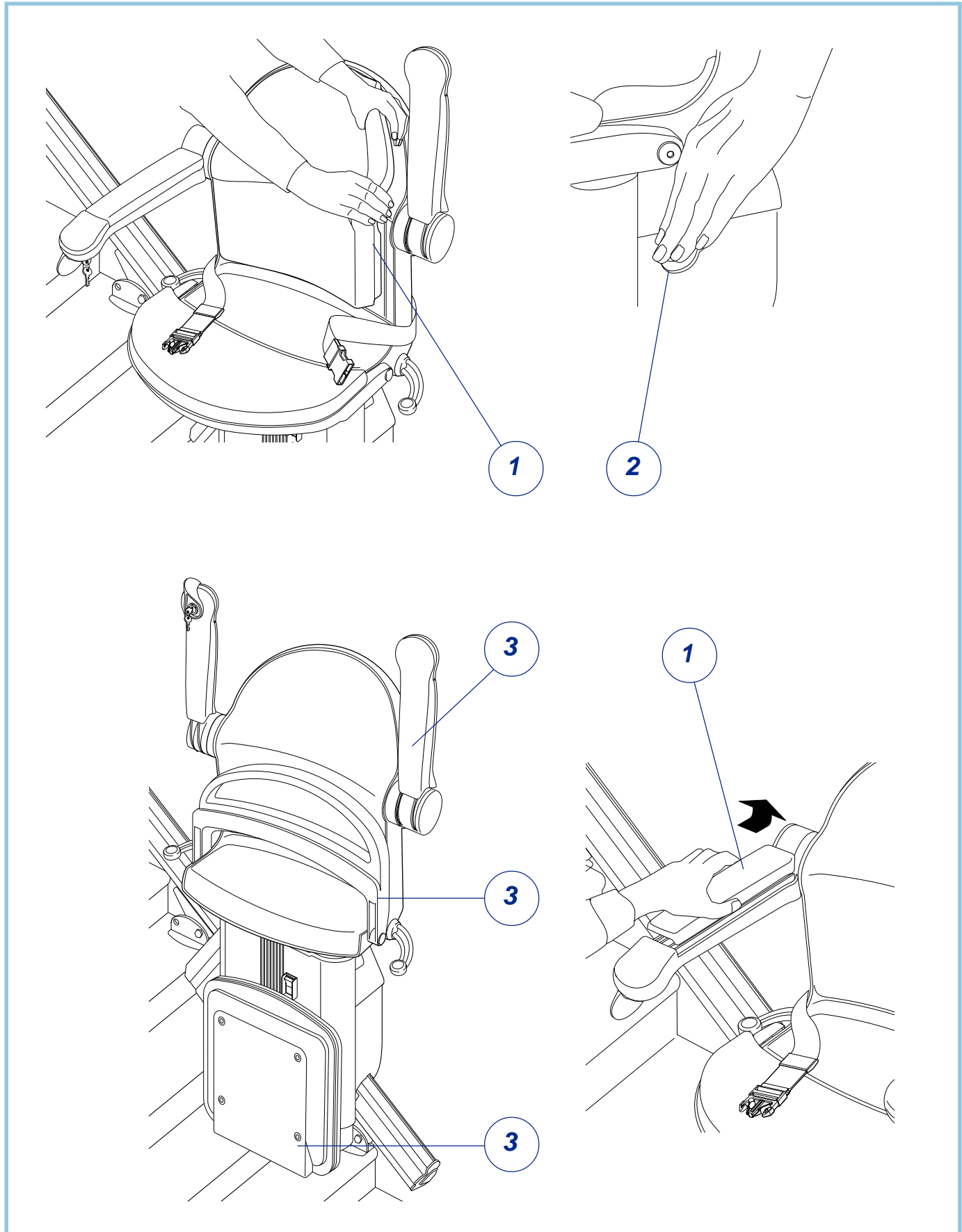
The lift is also fitted with an off/off switch which allows for an additional way of switching off the lift.

Lap belt – all of the Minivator 1000 seats are fitted with a lap belt which should be fastened around the user to provide safe use of the lift up and down the stairs.

6. Lap belt

All of the Minivator 1000 seats are fitted with a lap belt which should be fastened around the user to provide safe use of the lift up and down the stairs.

Features of the Minivator 1000 Seat



1. Removable cushions

The luxury seat is fitted with removal cushions which allow for the upholstery to be changed either when changing décor in the home or due to damage of one or a number of cushions in the set. In addition to this it allows for the end user to choose the cushions set at the last moment or to change their mind without the consequential problems associated traditionally with changing the colour choice on the seat. All cushions are easily removal and changeable within a few minutes.

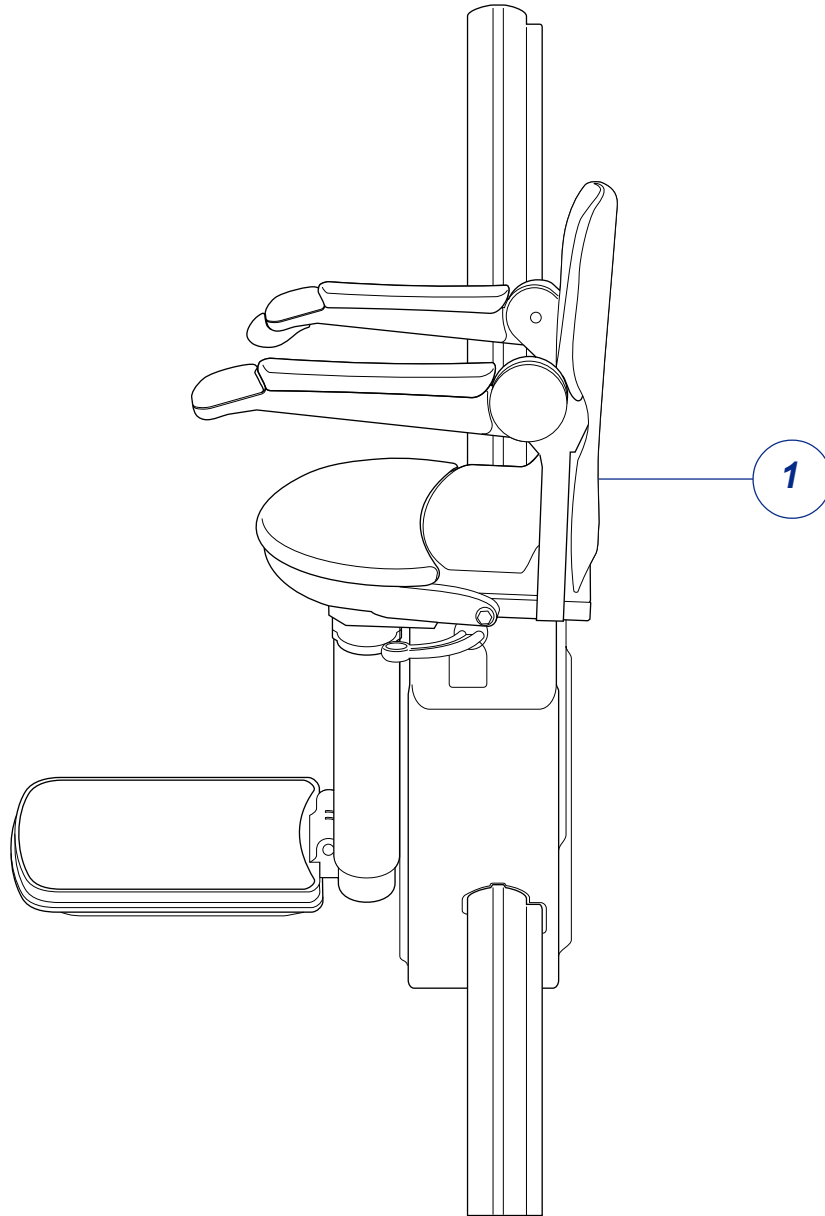
2. Seat swivel lever

The luxury and spacesaver seats are both fitted with seat swivel levers on both sides of the seat which reduces complication in specifying the lift in the initial stages and also gives the user who may become further disabled at a later point, the option to use an alternative hand. The swivel release levers operate both in a downward and upward direction again allowing for users with varying disabilities to be able to use the operating lever.

3. Fold way

The foot rest, seat fob and arms fold into a vertical position, folding the lift away to fit more tightly to the edge of the stair, therefore leaving the stairway free for others in the home to use.

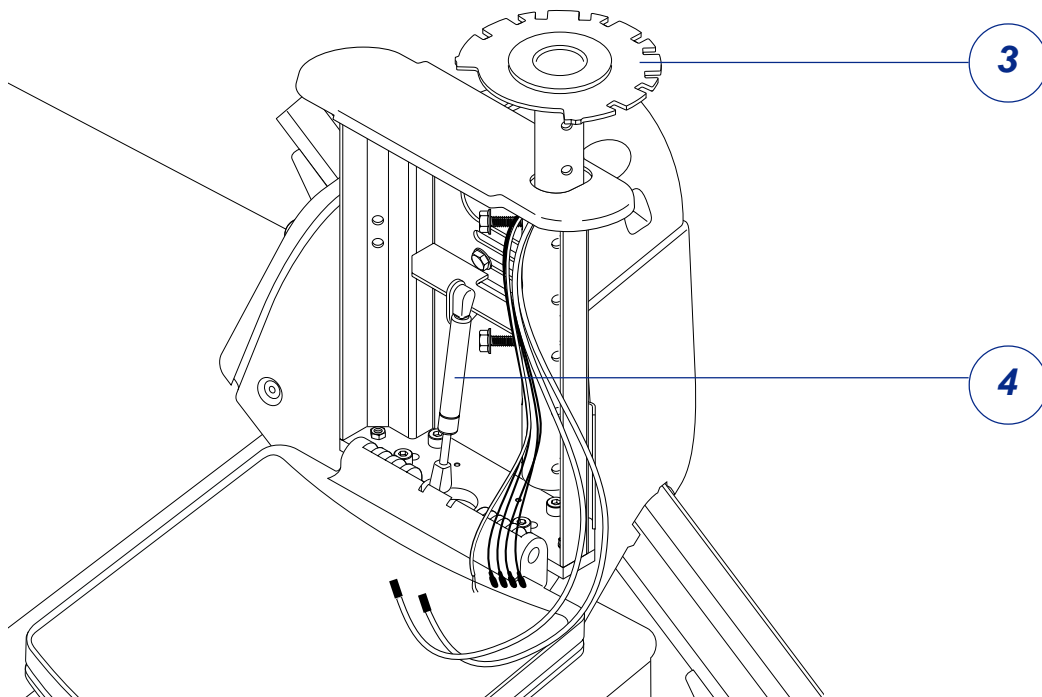
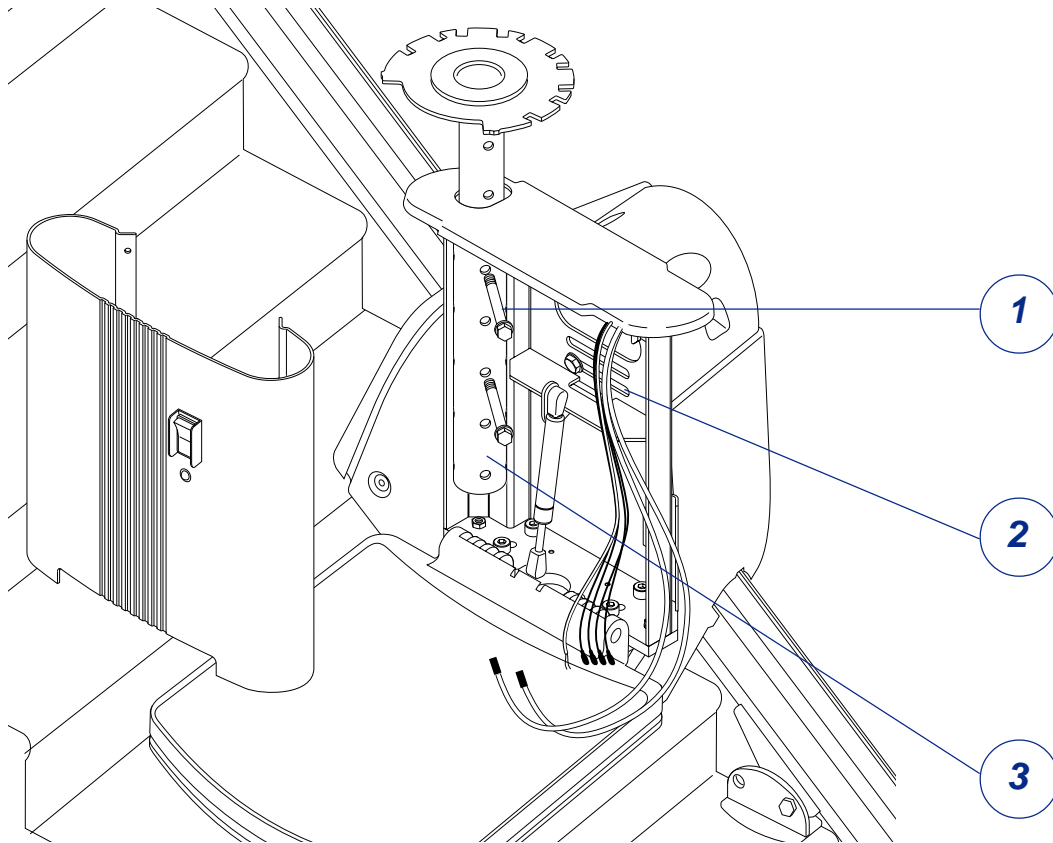
Features of the Minivator 1000 Spacesaver Seat



Space saver seat

The Minivator 1000 has the option to fit a space saver seat to it which reduces drastically the amount of intrusion into the stair of the seat providing a wall to back measurement of as little as 60mm. This allows for the Minivator 1000 to be fitted into very tight staircases with minimum clear width as low as 680mm.

Features of the Minivator 1000 Seat height adjustment



1. Height adjustment

The height to the seat can be simply adjusted by re-positioning the bolts into one of four different positions. This provides seat range adjustability of 430-530mm, this therefore allows the user to sit in a more comfortable position and maximises the ability to customise the lift for users with various different disabilities and knee flexion problems.

2. Foot plate height adjustment

The 1000 series also has the ability to higher or lower the foot plate height by up to 20mm providing a low step up height of 80mm where required for users who may struggle to otherwise get onto the stairlift. In addition, there is lateral adjustability of the front chassis along the line of slots shown in the diagram to allow the footplate to be adjusted away from or towards the nose of the stair, providing more flexibility on installation.

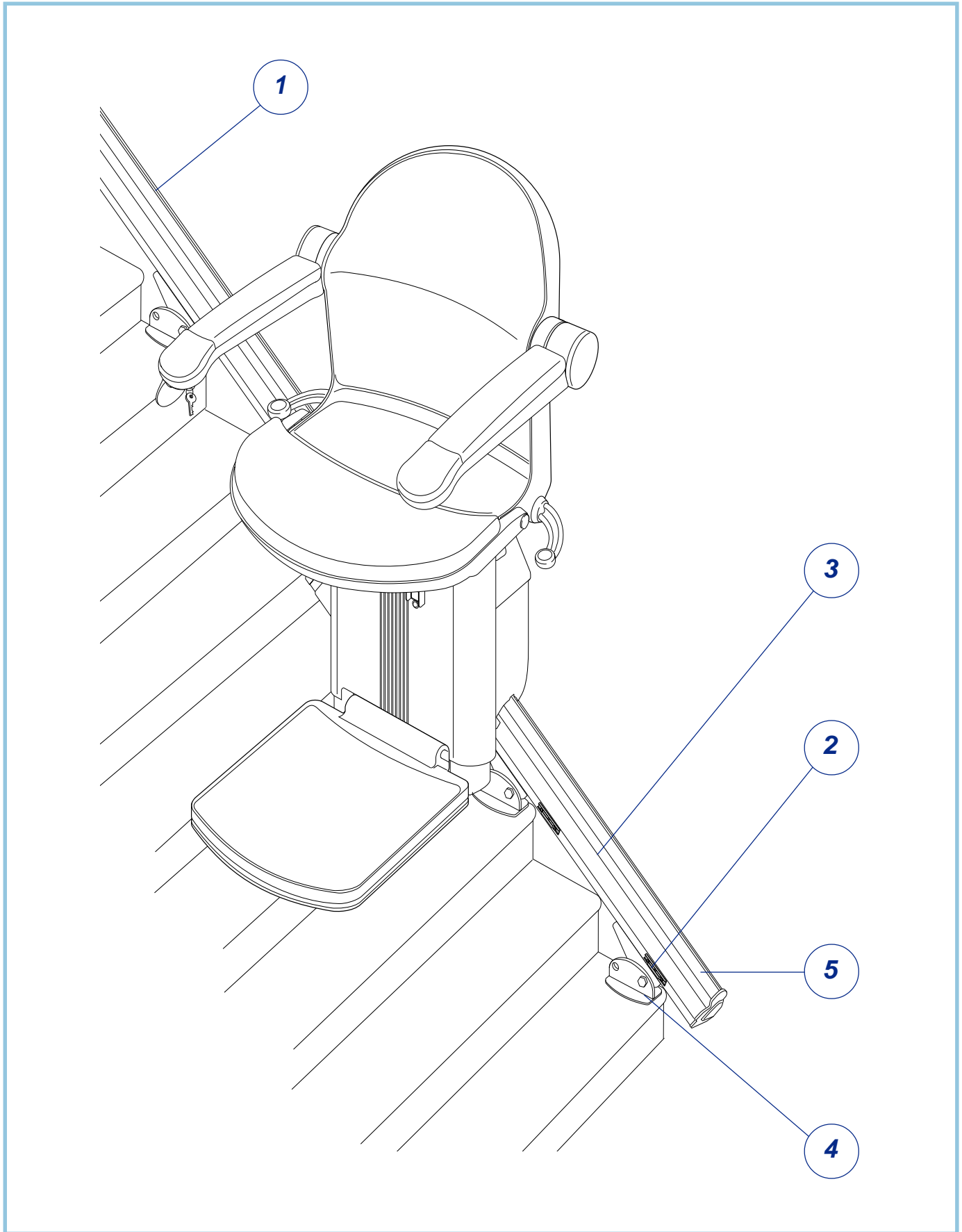
3. Easy to swop hands of the unit

The power pack can be fitted very easily to the left or right hand side of the stairs, simply by moving the seat posts from one side to the other as pictured. This allows for increased flexibility and modularity of the lift in terms of specification and ordering from Minivator.

1. Gas strut assisted footplate

The footplate is connected to a gas strut which makes folding up of the footplate much easier and removes the need for constant pressure to raise the footplate.

Features of the Minivator 1000 Track and Benefits



Features of the Minivator 1000 Track and Benefits

1. Spliced track

All tracks will be shipped from Minivator spliced which allows for much easier handling of the lifts during both goods receiving and during installation. As a result this benefit becomes a low cost option rather than a costed option at present.

2. Charge points

The lift is fitted with charge points at both top and bottom where the lift will charge. If the lift is left parked away from the charge points then an audible warning is sounded reminding the user to ensure the lift is on the charge point. Having charge points rather than a trailing cable reducing wear and tear on the lift as well as reducing the need for wiring at time of installation.

3. Hidden rack

The Minivator 1000 is driven by a rack and pinion gear system. However, the track is designed in such a way that the rack which is fastened underneath the lip in the front of the track is not visible to the user once the lift has been installed into their home. This provides a much more aesthetically pleasing installation and makes the lift more like a piece of furniture rather than a machine.

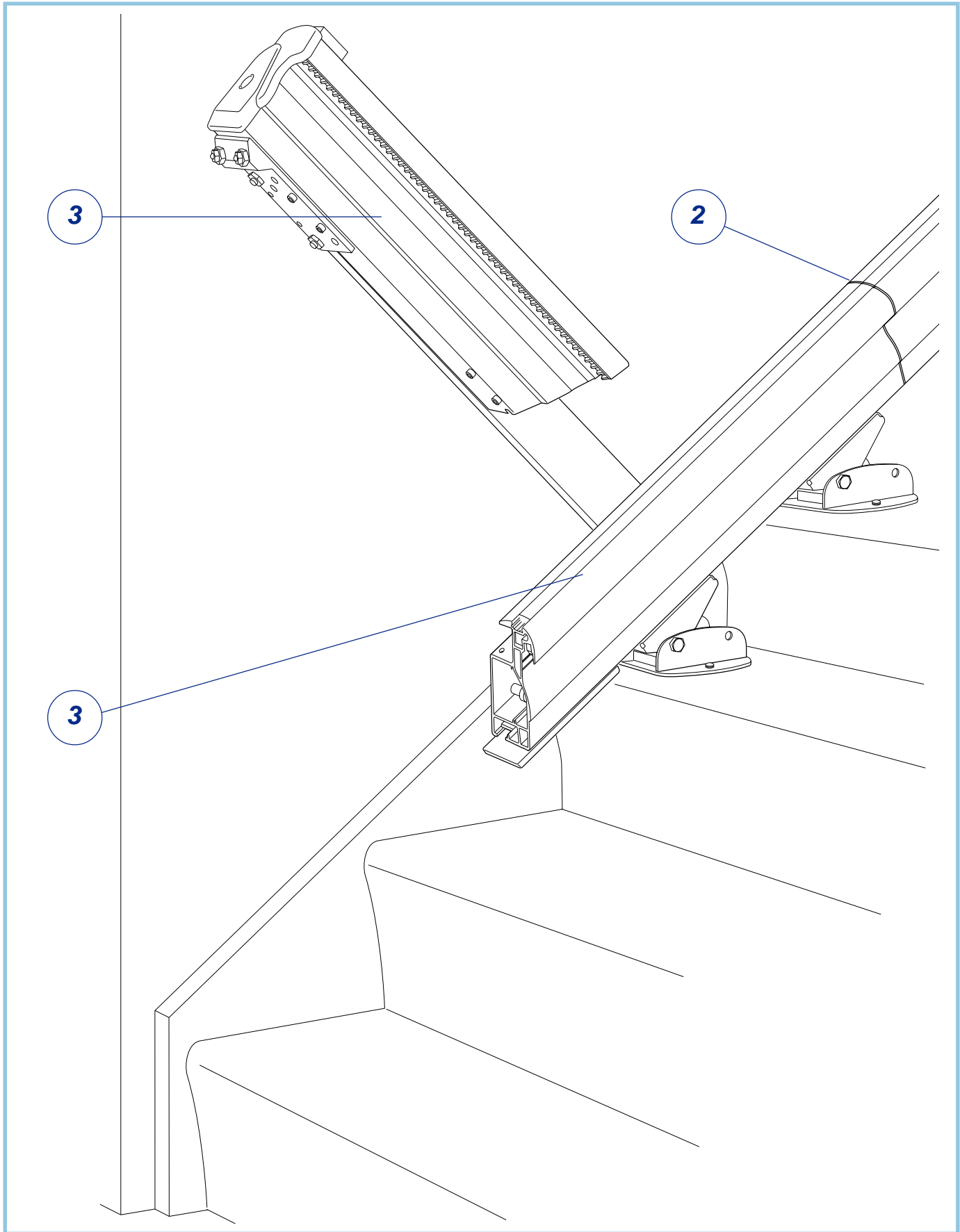
4. Universal feet

The universal feet which can be fitted to the left or right side of the staircase allow for very easy installation with front adjustable foot to allow for the vertical angle of the stairlift to be set as well as ease of fit to the track allowing the track to be fitted once to the stair therefore reducing installation time and inconvenience to the customer.

5. Finishing strip

Plastic strip which runs on the top side of the track covers the reed switches which are used to control the finishing position of the lift. This allows for easy adjustment of the end stops to provide maximum advantage to the lift engineer in being able to easily set up the lift to finish in the appropriate position.

Features of the Minivator 1000 Track and Benefits



1. **Balanced folding mechanism**

The Minivator 1000 folding hinge track whether powered or manual is designed so that the weight of the track is balanced to allow for minimum amount of force required to move the track. This means that when in manual mode the track can be easily raised or lowered, requiring very little strength from the user, but also that when in the powered mode, the folding rail is entirely safe as the folding part of the track will stop when any small amount of force is applied to it therefore reducing the risk of injury to users or other members of the household.

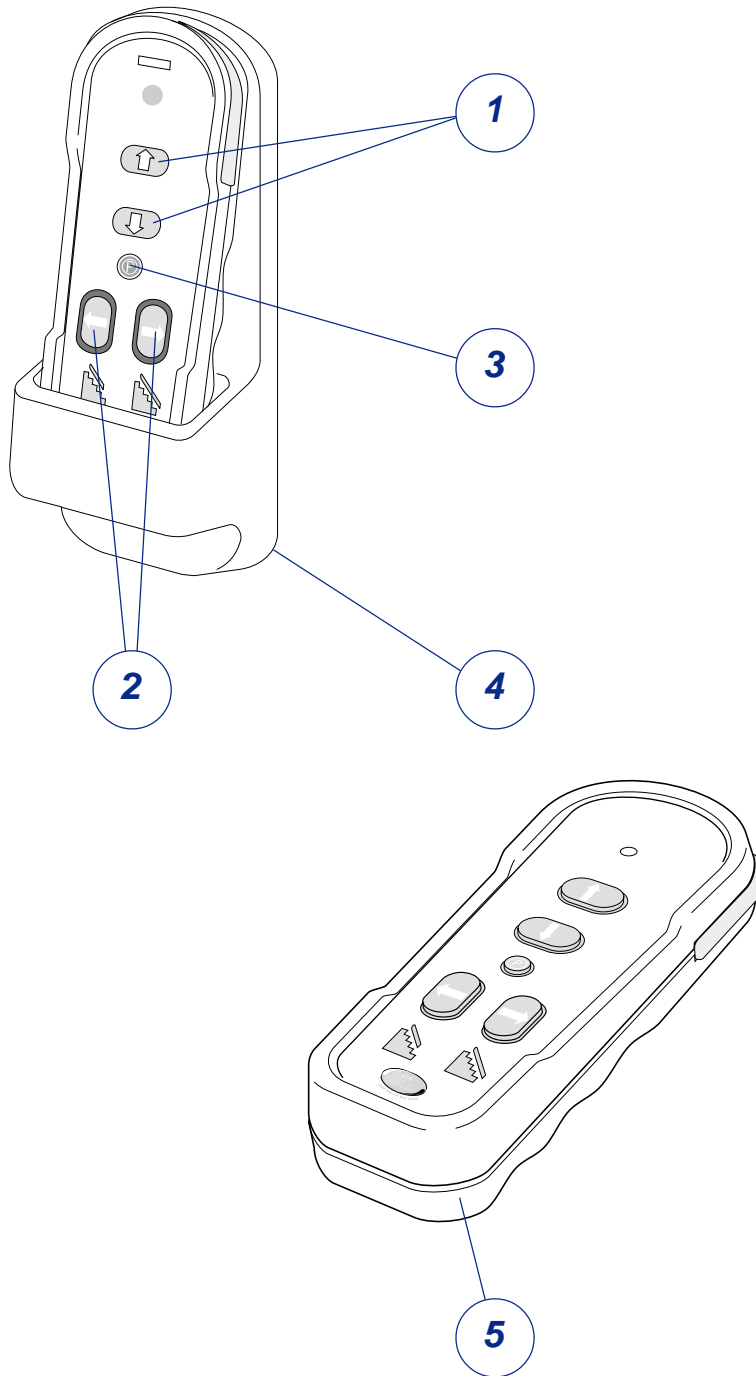
2. **Modular system**

The folding rail is a discreet modular system that can be fitted to any normal track rail. This is achieved merely by splicing the normal rail with the folding hinge unit. This means that a standard stock lift can be fitted to a powered folding hinge kit allowing much easier stocking of lifts and faster installation times.

3. **Slimline**

The obvious benefit of the slimline track is it is very close to the wall of the stair therefore leaving more of the stair clear for other members of the household. The additional space required for the folding mechanism is minimal which therefore compliments the close fitability of the Minivator 1000.

Features of the Minivator 1000 Hand Control



1. Up and down function

The lift can be called or sent to the bottom or top of stairs simply by pressing and holding the up and down arrows as appropriate. This allows for multi user occupancy of the house or for the lift to be parked at either end of the stair for convenience.

2. Powered folding rail

Where a powered folding rail is fitted then this can be raised or lowered from the remote control by depressing either the left hand arrow for up or the right hand arrow for down.

3. Hinge park button

When a powered hinge rail is fitted then the charge points are situated above the hinge rail section of the track and the park button facility on the wall mounted control allows for the lift to be automatically parked on the charge point and the rail to be raised.

4. Remote holder

The lift comes complete with holder for the hand held remote control and these holders can be set up to either have the hand held device removable or so that the hand held device can be fixed into the holder and not removed.

5. Remote control or attendant control

The hand held remote control device can be used as a walk about stand alone control which allows for the lift to be used in attendant control mode rather than the user having to operate the lift themselves. This obviously can be very beneficial in certain circumstances where it is required for a carer to operate the lift rather than for the user of the lift.